

# BEYOND WORDS

2020 ANNUAL REPORT

The  
Memorial Foundation



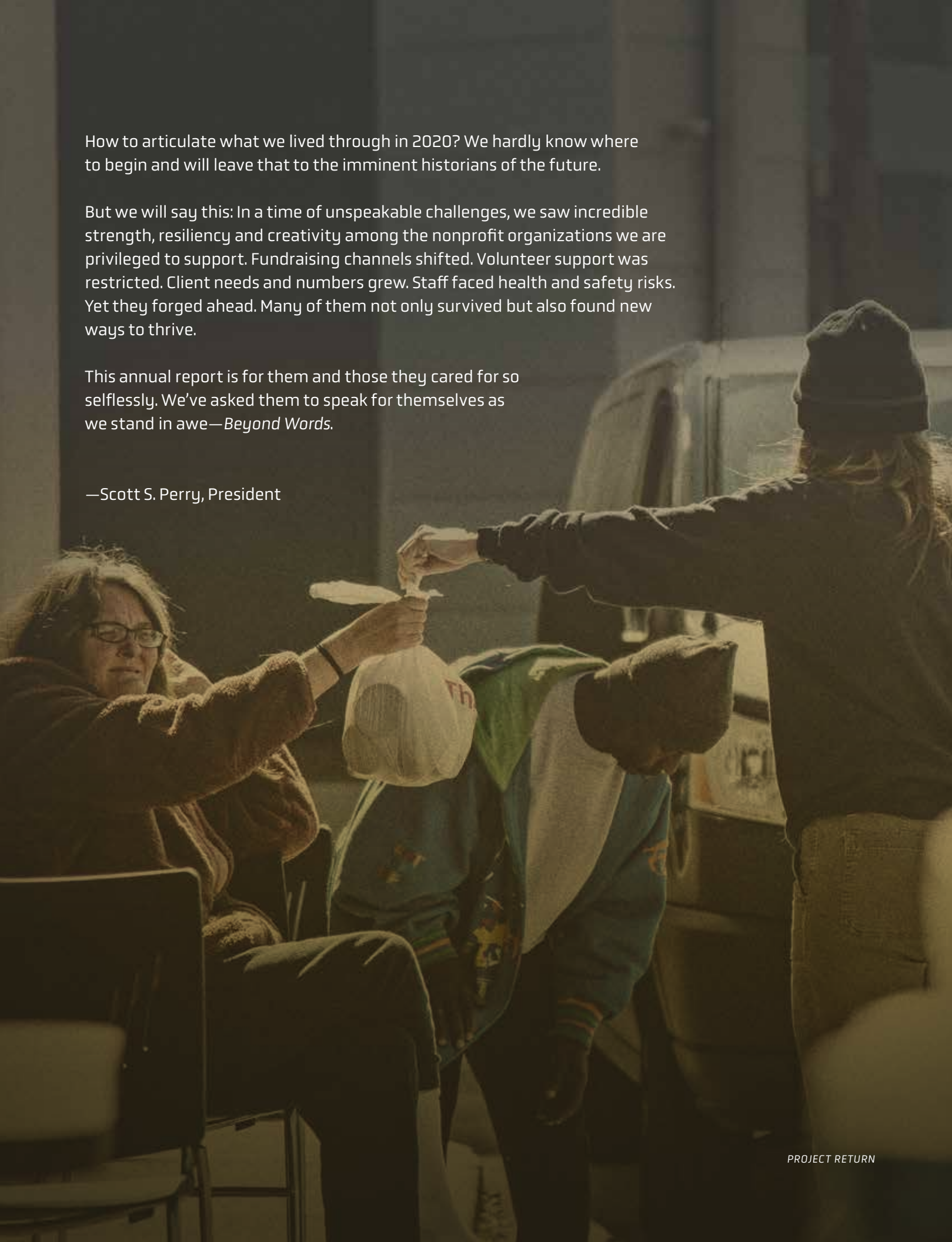


How to articulate what we lived through in 2020? We hardly know where to begin and will leave that to the imminent historians of the future.

But we will say this: In a time of unspeakable challenges, we saw incredible strength, resiliency and creativity among the nonprofit organizations we are privileged to support. Fundraising channels shifted. Volunteer support was restricted. Client needs and numbers grew. Staff faced health and safety risks. Yet they forged ahead. Many of them not only survived but also found new ways to thrive.

This annual report is for them and those they cared for so selflessly. We've asked them to speak for themselves as we stand in awe—*Beyond Words*.

—Scott S. Perry, President



PROJECT RETURN

## THE UNPRECEDENTED SCOPE OF 2020'S CRISES DAWNS

“

On March 5, 2020, I knew life would be different. I contacted two medical doctors and asked each what they were expecting with COVID. Their responses rattled me to the core and forecasted what was to come. ”

*NeedLink—Lee Anne Wills, Executive Director*

“

March 13, 2020 was a grim day. Our former CEO and I had a frank discussion about the safety of our clients, residents, and staff. Without any concrete information, it was difficult to know the right path. ”

*Operation Stand Down—Eden Murrie, CEO*



“

It all became vividly real as we divided the staff up into shift teams and cross-trained one another so that Siloam could continue to serve vulnerable patients if staff were quarantined, sick, or hospitalized. ”

*Siloam Health—Dr. Morgan Wills, CEO & President*

“

The city was a ghost town, and its pedestrians—especially those who'd just been released from incarceration—were refugees. It was unlike anything we'd ever experienced. ”

*Project Return—Bettie Kirkland, CEO*



**THEN CAME THE WORRIES.  
WILL WE SURVIVE?  
WILL THE PEOPLE WE SERVE?**

“

We definitely worried about the pandemic's impact on our contributed income. We quickly reimagined program delivery virtually. Our donors supported us every step of the way.”

*PENCIL—Angie Adams, CEO*

“

Many of our families are in a constant state of survival. We shifted from providing after-school programming to prioritizing basic needs—delivering books, activities, meals and hope to families' doorsteps.”

*Youth Encouragement Services—Viva Price, Executive Director*

“

Fortunately, careful stewardship of our resources in recent years, disciplined—and sometimes difficult—transfers to reserves, and generous donor support enabled our Y to endure.”

*YMCA— Dan Dummermuth, President and CEO*

“

I never thought for a moment we would not survive. I knew almost immediately our programs and services would change forever.”

*FiftyForward—Sallie Hussey, Executive Director*

Total grants awarded in 2020  
**194**



PENCIL



## THE CHALLENGES WERE GREAT

“

In Tennessee, we faced eight weeks of devastating spring storms. Across the country, the Red Cross provided more nights of shelter than any other year in history.”

*American Red Cross—Leigh Elliott, Regional Philanthropy Officer*

“

Not everyone has been ‘safer at home’ throughout the pandemic, especially abuse victims and survivors. Fortunately, our staff and clients demonstrated unbelievable resilience and strength.”

*Sexual Assault Center—Rachel Freeman, President*

“

We had to learn how to prepare thousands of healthy meals each week without the supportive hands of our volunteers.”

*Nashville Food Project—Teri Sloan, Chief Operations Officer*

“

Required social distancing, increased cleaning protocols, canceled events, and discontinuing volunteer services due to the pandemic put unusual strain on the Mission. But through it all, we stood firm and stayed strong.”

*Nashville Rescue Mission—Glenn Cranfield, President and CEO*

## THE WILL TO OVERCOME THEM WAS GREATER

“

While our thousands of volunteers build capacity for our partners each year, their impact was more evident than ever in 2020 as they responded to the tornado, COVID-19, and the Christmas Day bombing.”

*Hands On Nashville—Lori Shinton, President and CEO*

“

We ramped up our operations to distribute 1 million pounds of food each week through targeted distribution to high-risk communities.”

*Second Harvest Food Bank of Middle Tennessee—Nancy Keil, President and CEO*

“

More Latinxs learned about our wraparound services as we began to provide rent or mortgage assistance, offer produce boxes and warm meals, and coordinate equitable COVID-19 vaccine distribution.”

*Conexión Américas—Juliana Ospina Cano, Executive Director*

“

Through it all, our staff persevered like the heroes they are – not complaining, showing up every day, and caring for others who were sick at great risk to their own health.”

*Hope Family Health—Jennifer Dittes, PA-C, CEO*



## AND WE EMERGED STRONGER THAN EVER

“ We created learning pods to keep our most at-risk students from falling behind and found that attendance, behavior, and academic achievement improved greatly. ”

*Backfield In Motion—Todd E. Campbell, Ed. D., CEO*



“ We will continue expanding our online capacity to train volunteer mediators—and to provide free remote mediation for communities that would otherwise be excluded from this gentler form of justice. ”

*Nashville Conflict Resolution Center—Sara Figal, Executive Director*

“ We saw firsthand the transformative power of human connection and ‘loving thy neighbor’ in the hardest of times. We emerged with a deepened commitment to help families rise above generational poverty. ”

*Martha O’Bryan Center—Marsha Edwards, President and CEO*

Total funds provided  
**\$5.97M**



“ We plan to take all of these lessons learned into the future. As hard as it has been, I believe we will be better because of 2020. ”

*Faith Family Medical Center—Laura Hobson, President*





# 2020 GRANTEE LISTING

A Soldier's Child  
 A Step Ahead Foundation of Middle Tennessee  
 A.B.L.E. Youth  
 Achilles International – Nashville Chapter  
 Adult Education Collective Impact  
 Adventure Science Center  
 AGAPE  
 Alignment Nashville  
 American Cancer Society–Greater Nashville Area  
 American Red Cross–Nashville Area Chapter  
 Andrew Jackson Foundation  
 Angel Heart Farm  
 Aphesis House  
 Ashley's Place  
 Backfield in Motion  
 Begin Anew  
 Belcourt Theatre  
 Bethlehem Centers of Nashville  
 Big Brothers Big Sisters of Middle Tennessee  
 Big Payback Middle Tennessee  
 Borderless Arts Tennessee  
 Boy Scouts of America, Middle Tennessee Council  
 Boys & Girls Clubs of Middle Tennessee  
 Bridge Ministry  
 Building Lives Foundation  
 Byrum–Porter Senior Center  
 CASA Nashville  
 Center for Nonprofit Management  
 Charis Health Center

Cheekwood  
 Christian Cooperative Ministry  
 Communities In Schools of Tennessee  
 Community Care Fellowship  
 Community Life Bridge  
 Conexion Americas  
 The Contributor  
 Cottage Cove Urban Ministries  
 Council on Aging of Greater Nashville  
 COVID–19 Response Fund  
 CrossBRIDGE  
 Crossroads Campus  
 Cumberland Crisis Pregnancy Center  
 Daystar Counseling Ministries  
 Dismas  
 Easter Seals Tennessee  
 Elijah's Heart  
 End Slavery Tennessee  
 Equal Chance for Education  
 Faith Family Medical Center  
 Family & Children's Service  
 The Family Center  
 Fannie Battle Day Home for Children  
 Fellowship of Christian Athletes  
 FiftyForward  
 First Steps  
 4:13 Strong  
 Friends of Mill Ridge Park  
 Friends of Sumner Regional Medical Center

Friends of the Gallatin Public Library  
 Friends of Warner Parks  
 Friendship House  
 Frist Art Museum  
 Gallatin CARES  
 Gallatin Shalom Zone  
 Gilda's Club Nashville  
 Girl Scouts of Middle Tennessee  
 GivingMatters.com  
 Goodpasture Christian School  
 Gordon Jewish Community Center  
 Grace Place Ministry  
 Greater Faith Community Action Corporation  
 Hands On Nashville  
 Harvest Hands Community Development Corporation  
 Heimerdinger Foundation  
 Hendersonville First Responder Project  
 Historic Cragfont  
 Historic Rock Castle  
 Home Bound Meals Program  
 Homework Hotline  
 Hope Clinic for Women  
 Hope Family Health Services  
 Hospital Hospitality House of Nashville  
 Imagination Library of Middle Tennessee  
 Insight Counseling Centers  
 Inspiritus–Middle Tennessee  
 Interfaith Dental Clinic of Nashville  
 Jason Foundation  
 Junior Achievement of Middle Tennessee  
 King's Daughters Child Development Center  
 Leadership Goodlettsville  
 Make–A–Wish Middle Tennessee  
 Martha O'Bryan Center  
 Mary Parrish Center  
 McNeilly Center for Children  
 Men of Valor  
 Mending Hearts  
 Mental Health America of Middle Tennessee  
 Monroe Harding  
 Monthaven Arts and Cultural Center  
 Nashville Adult Literacy Council





## 2020 GRANTEE LISTING continued

Nashville Ballet  
 Nashville Chamber Public Benefit Foundation  
 Nashville Children's Theatre  
 Nashville Coaching Coalition  
 Nashville Community Bail Fund  
 Nashville Conflict Resolution Center  
 Nashville Food Project  
 Nashville International Center for Empowerment  
 Nashville Launch Pad  
 Nashville Public Education Foundation  
 Nashville Public Library Foundation  
 Nashville Public Television  
 Nashville Rescue Mission  
 Nashville Symphony  
 Nashville Youth for Christ  
 National Museum of African American Music  
 NeedLink Nashville  
 New Beginnings Center  
 The Next Door  
 Nurses for Newborns of Tennessee  
 Nurture the Next  
 Oasis Center  
 100 Black Men of Middle Tennessee

Open Table Nashville  
 Operation Andrew Group  
 Operation Stand Down Nashville  
 Orange Heart Medal Project  
 Our Kids  
 Oz Arts  
 PENCIL Foundation  
 Pet Community Center  
 Pope John Paul II High School  
 Poverty and the Arts  
 Preston Taylor Ministries  
 Project Connect  
 Project Return  
 Project Transformation Tennessee  
 Raphah Institute  
 REBOOT Recovery  
 Rebuilding Together-Nashville  
 Refuge Center for Counseling  
 Rejoice School of Ballet  
 Renewal House  
 Saddle Up!  
 Safe Haven Family Shelter  
 Salama Urban Ministries



Salvus Center  
 Scott Hamilton CARES Foundation  
 Second Harvest Food Bank of Middle Tennessee  
 Sexual Assault Center  
 Show Hope  
 Shower the People  
 Siloam Health  
 Simon Youth Foundation  
 Skyline Auxiliary  
 Small World Yoga  
 Society of St. Andrew  
 SongwritingWith:Soldiers  
 Southeastern Council of Foundations  
 Special Needs Sports Foundation  
 St. Luke's Community House  
 STARS Nashville  
 Sycamore Institute  
 Tennessee Breast Cancer Coalition  
 Tennessee Coalition to End Domestic and Sexual Violence  
 Tennessee Environmental Council

Tennessee Historical Society  
 Tennessee Immigrant and Refugee Rights Coalition  
 Tennessee Justice Center  
 Tennessee Justice for Our Neighbors  
 Tennessee Medical Foundation  
 Tennessee Performing Arts Center  
 Tennessee Prison Outreach Ministry  
 Tennessee Senior Olympics  
 Tennessee Wildlife Federation  
 University School of Nashville  
 Urban Green Lab  
 Urban Housing Solutions  
 Victor S. Johnson III Nashville Children's Alliance  
 Welcome Home Ministries  
 Westminster Home Connection  
 Why We Can't Wait  
 YMCA of Middle Tennessee  
 Youth Encouragement Services  
 Youth Villages  
 YWCA of Nashville and Middle Tennessee





## BOARD MEMBERS

**Alfonzo Alexander**  
President  
NASBA Center For  
The Public Trust

**Frank M. Bumstead**  
Chairman  
Flood, Bumstead,  
McCready & McCarthy, Inc.

**Varina F. Buntin**  
Community Leader

**Allison DeMarcus**  
Community Leader

**Charles W. Fentress**  
Consultant  
Government Affairs

**Frank E. Gordon**  
Managing Partner  
Crofton Capital

**Frank Grace, Jr.**  
Retired Partner  
Waller

**Beth B. Little**  
Community Leader

**Drew R. Maddux, Sr.**  
President  
Maddux Realty &  
Construction Co., Inc.

**David E. McKee, M.D.**  
Physician  
Plastic & Reconstructive  
Surgery

**Judge George C. Paine, II**  
Retired Chief Judge  
United States Bankruptcy  
Court Middle Tennessee  
District

**J. Edward Pearson**  
President and COO  
Healthstream, Inc.

**H. Eddie Phillips**  
Chairman  
E. Phillips Development

**Gini Pupo-Walker**  
State Director for Tennessee  
Education Trust

**Jo Sanders**  
Community Leader

**Barbara Springer**  
Treasurer  
Dollar General Corp.

**I. Michele Williams, M.D.**  
Medical Director  
Matthew Walker  
Comprehensive Health Center

**S. Fleming Wilt**  
President  
Christie Cookie Co.

*Emeritus Members*

**William P. Puryear**  
Immediate Past Chair

**Charles B. Beck, M.D.**  
**L. Dale Beck, M.D.**

*Officers*

**Frank Grace, Jr.**  
Chair

**Frank M. Bumstead**  
Vice Chair

**Judge George Paine, II**  
Secretary

**Scott S. Perry**  
President

**Jackson Routh**  
Vice President, Programs And  
Grants

**Judy Milliken**  
Vice President, Finance



Frank Grace, Jr. (right) has faithfully served as Board Chair of the Memorial Foundation's Board of Trustees for the past six years. He passes the torch to Dr. David E. McKee, MD (left) to continue the legacy of constant and steadfast stewardship of the Foundation's mission.

## 2020 FINANCIAL POSITION

The Memorial Foundation, Inc. and Affiliated Entities  
Consolidated Statement of Financial Position  
For period ending December 31, 2020

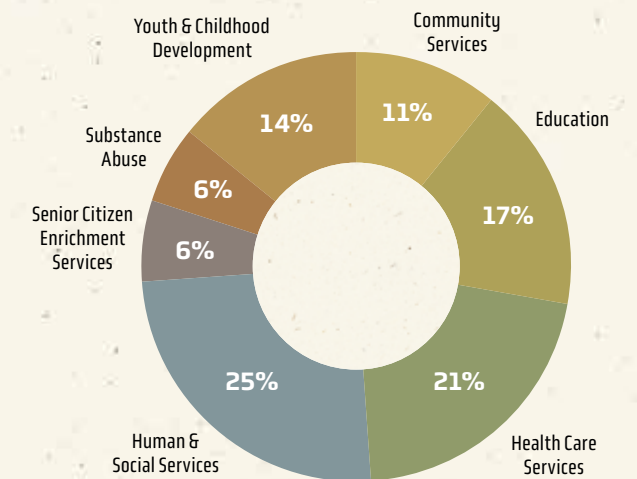
ASSETS	
Cash and short-term investments	\$8,741,348
Investments	117,872,889
Investment - commercial real estate, net	8,229,964
Accounts receivable	104,253
Prepaid expenses	154,904
Furniture and equipment - net	21,909
<b>TOTAL ASSETS</b>	<b>\$135,125,267</b>
LIABILITIES	
Accounts payable and accrued expenses	\$205,739
Grants payable	70,000
<b>TOTAL LIABILITIES</b>	<b>\$275,739</b>
NET ASSETS	
Unrestricted	\$132,295,985
Temporarily restricted	2,553,543
<b>TOTAL NET ASSETS</b>	<b>\$134,849,528</b>
<b>TOTAL LIABILITIES AND NET ASSETS</b>	<b>\$135,125,267</b>

The Memorial Foundation is audited by the independent auditing firm of Kraft CPAs PLLC



## 1996-2020 GRANTS

Summary of Grants Awarded by Program Area



The Memorial Foundation staff (left to right)

**Jackson Routh**  
Vice President, Programs and Grants

**Lauren Willoughby**  
Program Associate

**Joyce A. Douglas**  
Executive Assistant

**Judy Milliken**  
Vice President, Finance

**Scott S. Perry**  
President





## **GRANT GUIDELINES**

The Memorial Foundation awards grants to nonprofit organizations that provide services to people who live in the communities served by Nashville Memorial Hospital. Requests for support outside this area are not considered.

All organizations requesting grants are subject to a review process that includes an initial interview with staff, submission of an application, a possible site visit, and approval by The Memorial Foundation's Board of Trustees.

Those interested in obtaining more information on grant guidelines may visit The Memorial Foundation's website at: [www.memfoundation.org](http://www.memfoundation.org) or write to:

The Memorial Foundation, Inc.  
100 Bluegrass Commons Boulevard, Suite 320  
Hendersonville, Tennessee 37075  
Phone: 615.822.9499

[www.memfoundation.org](http://www.memfoundation.org)